



Consolidated Remote Management KVM-over-IP and serial access in one box

Dominion KSX II Series

A powerful combination of remote KVM-over-IP, serial console access and remote power control.

KSX2-144

- Four serial ports and four KVM-over-IP ports
- One remote KVM user over the network
- Four serial users
- One user at the rack
- Two remote power control ports
- Internal modem

KSX2-188

- Eight serial ports and eight KVM-over-IP ports
- One remote KVM user over the network
- Eight serial users
- One user at the rack
- Two remote power control ports
- Internal modem

The Dominion KSX II difference

Dominion KSX II is an integrated, hardware-based solution that offers you secure, remote KVM (keyboard, video and mouse) access, serial device management and power control. Targeted at branch and remote offices, the Dominion KSX II is also ideal for labs, computer rooms and data centers with racks containing both serial- and KVM-controlled devices. With Dominion KSX II, you'll reduce travel costs, decrease downtime, increase productivity and increase security. Unlike other remote control software solutions, Dominion KSX II provides:

- ▶ One consolidated view of all IT equipment connected to the KSX II
- ▶ A single, platform-independent solution offering centralized, integrated and secure control
- ▶ BIOS-level KVM-over-IP control of computer servers, console-level control of serial devices and remote power control
- ▶ Virtual media, giving users the ability to install software, run hardware diagnostics, transfer files and even remotely reimage a server
- ▶ Absolute Mouse Synchronization™, which reduces installation time and sets a new standard for mouse synchronization
- ▶ Network-independent access via a built-in modem for emergency access

Secure, remote, out-of-band access and power control of up to 16 servers and other network devices over IP

Raritan's Dominion KSX II is designed specifically to make the management of your IT infrastructure at branch locations faster, easier, simpler and more cost-effective. This innovative device combines secure BIOS-level KVM-over-IP, console-level access and cold-start power control (when used with the Dominion PX™) of everything in your remote server rooms. This means that from anywhere you access the Web, you can directly access, troubleshoot and even reboot all of your remote equipment, including:

- | | | |
|-----------------------|-----------------------|-------------------------|
| ▶ Application servers | ▶ Serial IT equipment | ▶ Security interfaces |
| ▶ File/Print servers | ▶ Switches | ▶ Domain servers |
| ▶ Headless servers | ▶ Routers | ▶ Load balancers |
| ▶ Network appliances | ▶ Firewalls | ▶ Environmental control |

Consolidated remote device management

Smart engineering translates into ease of use with:

- ▶ A single, consolidated view of all servers and other IT devices from one screen, at the rack, via Web browser or CommandCenter® Secure Gateway, Raritan's centralized management solution

Anytime, anywhere access and control

- ▶ A single sign-on and Web-based interface, providing easy access to servers and other IT devices
- ▶ With virtual media, users can remotely install software, transfer files and even reimage a server
- ▶ Point-and-click or command-line control of devices
- ▶ Secure, centralized authentication and logging with LDAP, RADIUS and Active Directory®
- ▶ A built-in modem for emergency access
- ▶ Local user console for direct access to servers and serial devices
- ▶ Easy plug-and-play installation and operation
- ▶ Optional remote power strips power on/off remote servers

Award-winning Dominion KX II performance

Dominion KX II includes all of the features you need for superior performance:

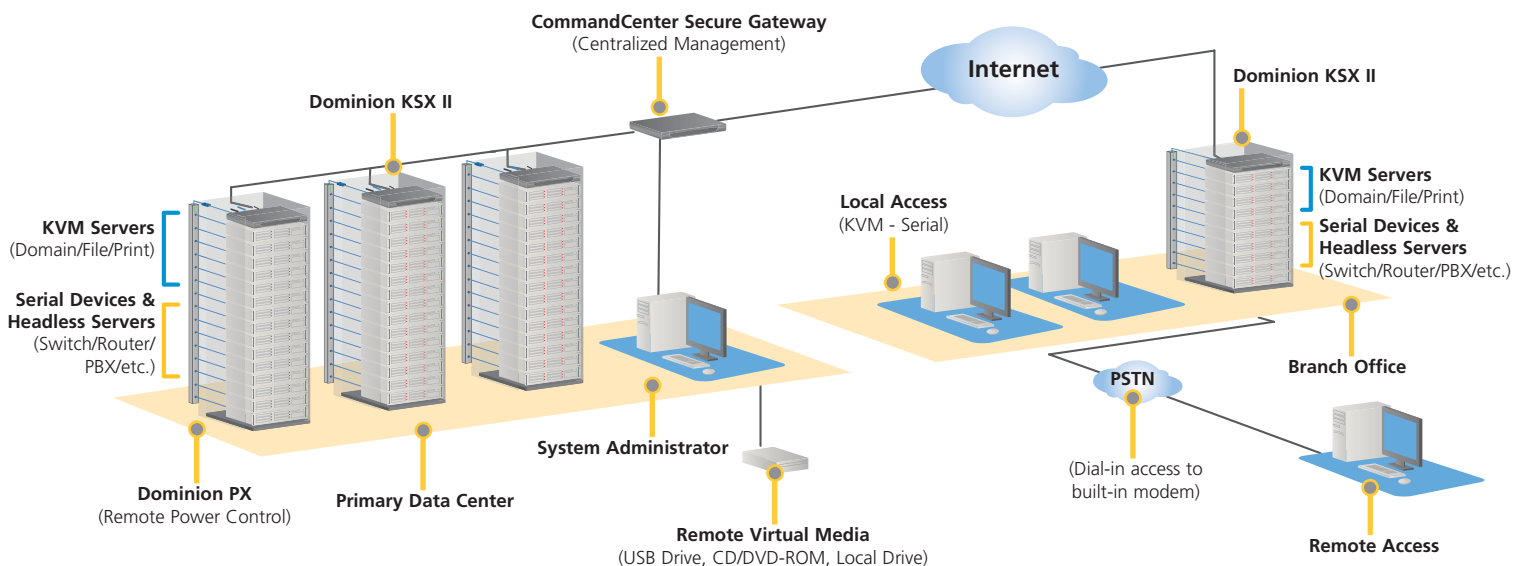
- ▶ High performance over low bandwidth connections, including modem, wireless, cable, DSL and fractional T1

- ▶ Industry-leading KVM-over-IP technology provides high-quality video with low bandwidth utilization
- ▶ Absolute Mouse Synchronization reduces installation time and sets a new standard for mouse synchronization
- ▶ Award-winning Dominion KX II video engine provides virtual at-the-rack performance with 1920x1080 HD resolution

Security

Dominion KX II provides bulletproof security via:

- ▶ FIPS 140-2–certified encryption module
- ▶ SmartCard/CAC authentication – remote and local
- ▶ Up to 256-bit AES encryption, SSL 128-bit RSA public key encryption and 128-bit RC4 private key encryption
- ▶ User authentication with Active Directory, RADIUS and LDAP support
- ▶ Strong password protection
- ▶ Customizable log-in security banner
- ▶ Dual stack networking: IPv4 and IPv6



Secure KVM-over-IP, serial console and power control

Return on investment

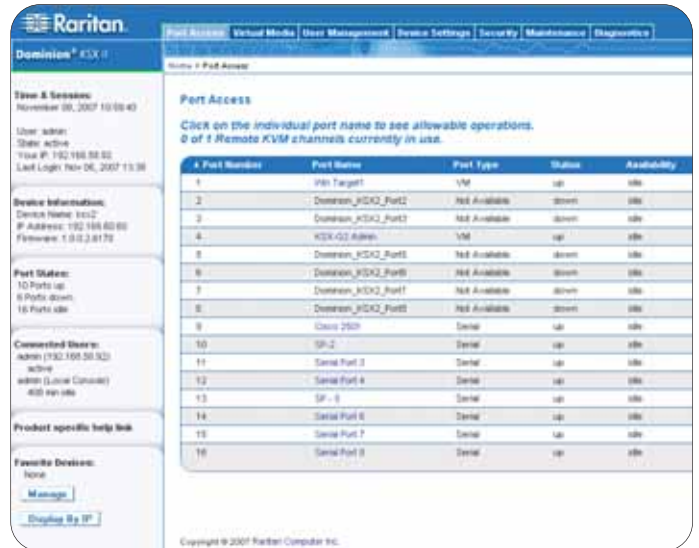
Dominion KX II pays for itself quickly by:

- ▶ Eliminating expensive and inconvenient travel to remote locations
- ▶ Reducing the costs of on-call labor and outsourced service providers
- ▶ Slashing expensive downtime by providing BIOS-level and network-independent access in emergencies
- ▶ Leveraging the centralized expertise of IT managers, regardless of their locations
- ▶ Replacing multiple software solutions with a single hardware solution, increasing efficiency and productivity

KVM-over-IP features

- ▶ With the Dominion KX II as its foundation, the KX II enables new levels of KVM-over-IP performance, reliability, usability and security
- ▶ Virtual media (CD/DVD ROM, USB drive, local drive, ISO image files)
- ▶ Absolute Mouse Synchronization
- ▶ Multiplatform PS/2, Sun® and USB server support. Native Windows® and Java™ clients support Windows, Linux®, Sun and Mac® users
- ▶ Supports Dell®, HP and IBM® blade servers
- ▶ Web browser-based local port
- ▶ FIPS 140-2-certified encryption module
- ▶ Smart card and DoD CAC authentication
- ▶ 256-bit AES encryption
- ▶ KVM-over-IP ports—choose from four or eight
- ▶ Two dedicated power control ports
- ▶ Dual gigabit Ethernet ports with failover
- ▶ Up to 1920x1080 video resolution, including widescreen formats
- ▶ Built-in modem

Anytime, Anywhere Access and Control



True serial access

- ▶ Four or eight simultaneous serial sessions
- ▶ No expensive serial dongles required
- ▶ Access via SSH, Telnet or Raritan Serial Client
- ▶ Local serial admin port with CLI
- ▶ Logging of console sessions
- ▶ Cut and paste between sessions
- ▶ Keyword monitoring and alerting
- ▶ User-defined log-off commands

CommandCenter Secure Gateway (CC-SG)

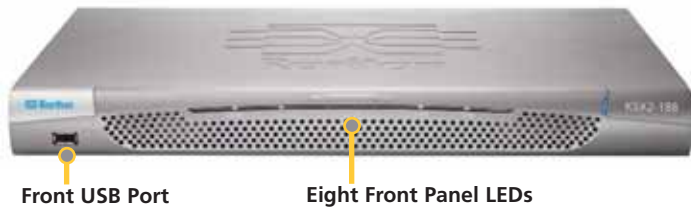
- ▶ Use KX II stand-alone or with CC-SG
- ▶ Single IP address, sign-on, authentication and logging
- ▶ Manage hundreds or thousands of branch offices
- ▶ Manage rack-based, blade and virtual servers
- ▶ Embedded service processors (iLO, DRAC, RSA)
- ▶ In-band access (RDP/VNC)

Raritan provides secure IT infrastructure management solutions that increase data center efficiency and productivity by delivering integrated in-band and out-of-band server access, control and power management. Raritan's KVM, serial console and intelligent PDU products are in use at over 50,000 locations worldwide. Raritan's OEM division provides embedded hardware and firmware for server and client management, including KVM over IP, IPMI, intelligent power management and other industry standards-based management applications.

Raritan has 38 offices worldwide, serving 76 countries. For more information, please visit Raritan.eu

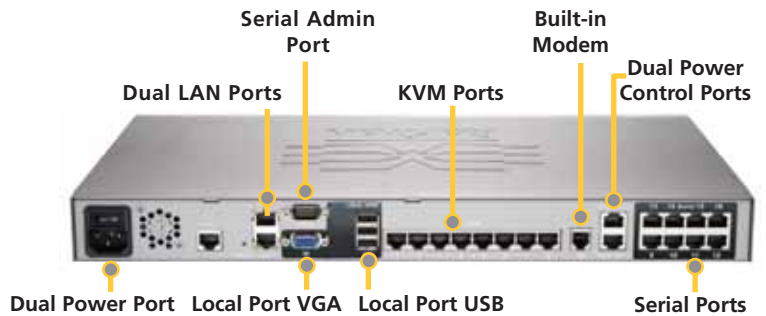
Specifications

DKSX2-188 shown



Front USB Port

Eight Front Panel LEDs



Dual LAN Ports

Serial Admin Port

KVM Ports

Built-in Modem

Dual Power Control Ports

Dual Power Port

Local Port VGA

Local Port USB

Serial Ports

Specifications for All Dominion KSX II Models

Form Factor	1U, full width, rack mountable (brackets included)
Dimensions - (WxDxH)	17.3" x 11.4" x 1.75"; 439 x 290 x 44mm
Weight	DKSX2-144: 8.51lb (3.86kg); DKSX2-188: 8.64lb (3.92kg)
Power	100V/240V 50/60Hz 0.6A
KVM Ports	4 (KSX2-144 model) or 8 (KSX2-188 model)
Serial Ports	4 (KSX2-144 model) or 8 (KSX2-188 model)
Power Control Ports	2
Local Admin Port (VGA) Video Keyboard/Mouse	HD15(F) VGA USB(F), 1 USB front, 3 USB rear
Local Admin Port (Serial)	DB9(M) RS232
Environmental Requirements	
Operating Temperature	32°F (0°C) to 104°F (40°C)
Remote Connection	
Network	Dual 10/100/1000 gigabit Ethernet access (RJ45) with failover. Dual stack IPv4/IPv6
Modem	Integrated 56K V.90 (RJ11 port) modem
Protocols	TCP/IP, UDP, RADIUS, LDAP, SNMP, SNTP, DHCP, PAP, CHAP, HTTP, HTTPS
Sample Video Resolutions	640x480, 720x400, 800x600, 1024x768, 1152x864, 1152x900, 1280x1024, 1440x900, 1680x1050 1600x1200, 1920x1080
Warranty	Two Years. In addition Raritan offers two years Extended Warranty.

KVM Computer Interface Modules (CIMs)

CIM Model	Description	Dimensions (WxDxH)	Weight
D2CIM-DVUSB	Dual USB CIM for BIOS virtual media, smart card/CAC and Absolute Mouse Synchronization	1.7" x 3.5" x 0.8"; 43 x 90 x 19mm	0.25lb; 0.11kg
D2CIM-VUSB	USB CIM for virtual media and Absolute Mouse Synchronization	1.3" x 3.0" x 0.6"; 33 x 76 x 15mm	0.20lb; 0.09kg
DCIM-PS2	CIM for PS/2	1.3" x 3.0" x 0.6"; 33 x 76 x 15mm	0.20lb; 0.09kg
DCIM-SUN	CIM for Sun	1.3" x 3.0" x 0.6"; 33 x 76 x 15mm	0.20lb; 0.09kg
DCIM-USBG2	CIM for USB and Sun USB	1.3" x 3.0" x 0.6"; 33 x 76 x 15mm	0.20lb; 0.09kg

Ready to manage smarter? Do it with Dominion KSX II.

Call +31 (0)10 284 4040 or visit Raritan.eu/Dominion-KSX2

©2011 Raritan Inc. All rights reserved. Raritan®, Know More. Manage Smarter™, Dominion®, CommandCenter®, and Absolute Mouse Synchronization™ are registered trademarks or trademarks of Raritan Inc. or its wholly-owned subsidiaries. All others are registered trademarks or trademarks of their respective owners.

Specifications are subject to change without notice.